



# ASSOCIATE OF SCIENCE- TRANSFER TRACK 2

## Physics

**START here**

### SUGGESTED Schedule to Earn an Associate Degree

If the classes listed below don't fit your schedule or you're planning to start after fall quarter, work with an advisor to develop your specialized education plan.

#### Year One

Fall	Credits
• MATH&151: Calculus I .....	5
• CHEM&161: General Chem w/Lab I .....	5
• ENGL&101: English Composition I .....	5
Winter	
• MATH&152: Calculus II.....	5
• CHEM&162: General Chem w/Lab II.....	5
• Humanities or Social Science*: Select with advisor.....	5
Spring	
• MATH&163: Calculus III.....	5
• CHEM&163: General Chem w/Lab III.....	5
• Specialization Course: select with advisor.....	5

#### Year Two

Fall	
• PHYS&221: Engineering Physics I w/Lab .....	5
• Social Science*: Select with advisor.....	5
• Specialization Course: select with advisor.....	5
Winter	
• PHYS&222: Engineering Physics II w/Lab.....	5
• Specialization Course: select with advisor.....	5
• Humanities*: Select with advisor.....	5
Spring	
• PHYS&223: Engineering Physics III w/Lab.....	5
• MATH 230: Differential Equations.....	5
• Specialization Course: select with advisor.....	5

**Total Credits Required: 90**

This degree gives students the opportunity to make substantial progress toward fulfilling major requirements while completing at least half of the Breadth requirements for Humanities and Social Science.

Completing the AS-T degree will prepare students for upper division study; it does not guarantee students admission to the major. The college recommends that the student identify one or two potential transfer schools and then contact qualified program advisors at those institutions as early as possible to obtain specific, course-by-course advice.



### TO DO'S:

#### QUARTER 1

- APPLY FOR FAFSA OR WASFA FOR NEXT YEAR
- SET UP YOUR BANKMOBILE ACCOUNT
- GET FAMILIAR WITH YOUR CTCLINK STUDENT HOMEPAGE
- MEET WITH YOUR ADVISOR

#### QUARTER 2

- MAKE AN EDUCATION PLAN WITH YOUR ADVISOR
- APPLY FOR BBCC FOUNDATION SCHOLARSHIPS
- IDENTIFY POTENTIAL TRANSFER SCHOOLS
- CONSIDER SUMMER UNDERGRADUATE RESEARCH PROGRAMS

#### QUARTER 3

- DECIDE ON TRANSFER SCHOOLS
- APPLY TO SUMMER UNDERGRADUATE RESEARCH PROGRAMS

#### QUARTER 4

- UPDATE YOUR EDUCATION PLAN WITH YOUR ADVISOR
- SUBMIT TRANSFER APPLICATIONS
- APPLY FOR FAFSA OR WASFA FOR NEXT YEAR

#### QUARTER 5

- APPLY FOR GRADUATION (AFTER ENROLLING IN YOUR FINAL QUARTER OF CLASSES)

#### QUARTER 6

- ORDER CAP AND GOWN
- ATTEND GRADUATION!

## Career Outlook

Physics is the study of nature at its most fundamental level. It is the science upon whose principles all other sciences and technologies are based.

Possible careers include physicists, physics teachers, lab technicians, academic researchers, acoustic consultants, astronomers, medical physicists, geophysicists, meteorologists, nuclear engineers, and more.

## Future Education Opportunities

The AS-T 2 Pre-Physics degree path allows students to prepare for upper divisions study toward a Bachelor of Science degree in physics and enter the college or university at junior standing, should they be admitted to the school's physics program.

## Find Out More

Jim Lin; [jiml@bigbend.edu](mailto:jiml@bigbend.edu); 509.793.2147  
<https://www.bigbend.edu/academics/physics/>

## Length of Program

90+ credits = 6+ quarters\* if you take 15 credits each quarter.

\*Your specific route may take longer than 6 quarters depending on the number of credits you take each quarter and where you start in your math and English pathways.

## Which Quarter Can I Begin?

Fall, Winter, Spring, or Summer

## Program Modality

This program can be completed on campus or hybrid. Courses are offered on-campus, online, or hybrid (part on-campus, part online).

## Helpful Hints

- Cumulative GPA must be 2.0 or higher
- Meet with your advisor each quarter to make sure you are on track!
  - Check your transfer institution for specific course requirements.

# SCHOLARSHIP INFORMATION

Central Washington University

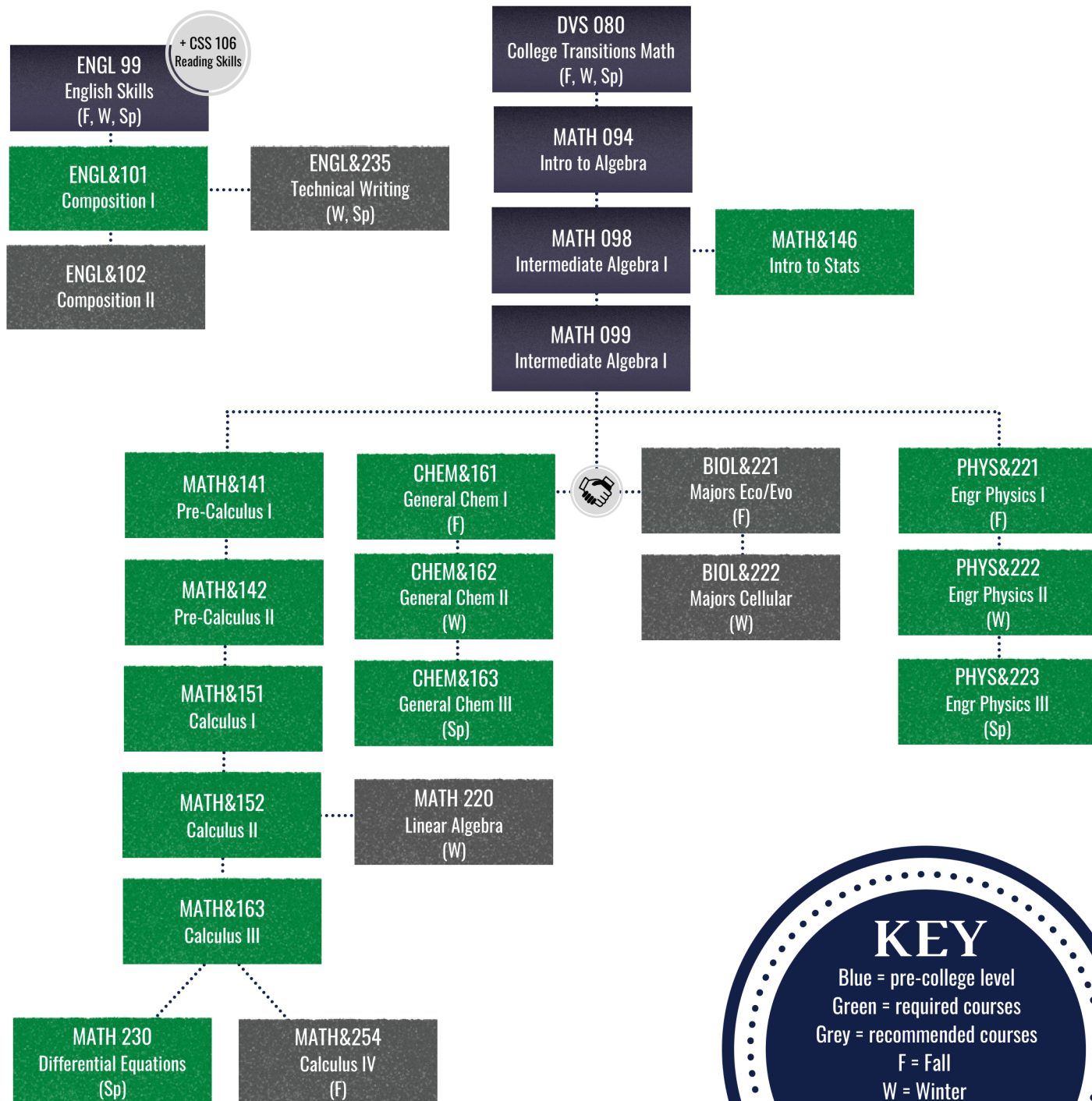
Washington State University

Eastern Washington University

University of Washington

# Engineering Pre-Requisite Flow Chart

Start by talking with an advisor to determine which courses to take first based on your placement



My Education Plan

Name: \_\_\_\_\_

ID #: \_\_\_\_\_

 Quarter/Year	Quarter/Year
Quarter/Year	Quarter/Year
Quarter/Year	Quarter/Year

# My Education Plan

Name: \_\_\_\_\_

ID #: \_\_\_\_\_

Quarter/Year

Quarter/Year

Quarter/Year

Quarter/Year

Quarter/Year

Quarter/Year

