



MANUFACTURING & PROCESS TECHNOLOGY AAS COMPUTER AIDED MANUFACTURING (CAM)

INDUSTRY, MANUFACTURING, & TRADES

START here

Requirements to Earn this Associate Degree

Work with an advisor to develop your specialized education plan.



Manufacturing & Process Technology

Core Requirements:

	Credits
• BIM 109A: Outlook/Internet.....	1
• BIM 180A: Microsoft Office (Word, Excel).....	2
• IST 100: Industrial Health & Safety 	3
• IST 102: Technical Drawing Interpretation 	3
• MPT 120: Intro to CAM	5
• MPT 140: Intro to IIOT and SCADA.....	3

General Education Requirements

• CMST&210: Interpersonal Communication OR CMST&220: Public Speaking.....	5
• ENGL&101: Composition I	5
• FAD 150: Industrial First Aid.....	2
• MAP 117 Math for Workforce 	5
• PSYC& 100: General Psychology OR SOC& 101: Intro to Sociology.....	5

Computer Aided Manufacturing (CAM) Emphasis Required Courses:

• ENGR& 112: Engineering Graphics II.....	5
• MPT 125: 2.5 Axis Milling.....	5
• MPT 130: CNC Turning.....	5
• MPT 135: Introduction to Additive Manufacturing.....	3
• MPT 145: Intro to Coordinate Metrology.....	5
• MPT 210: Introduction to Industrial Robotics.....	5
• MPT 220: CAM for 3-Axis Milling.....	5
• MPT 225: CAM for Multi-Axis Milling.....	5
• MPT 230: Cobot-Enabled CNC Machining.....	3
• Advisor Approved Additional Credits	10

Total Credits Required: 90

TO DO: Stay on track with this checklist!

TO DO'S:

QUARTER 1

- APPLY FOR FAFSA OR WASFA FOR NEXT YEAR
- SET UP YOUR BANKMOBILE ACCOUNT
- GET FAMILIAR WITH YOUR CTCLINK STUDENT HOMEPAGE
- MEET WITH YOUR ADVISOR

QUARTER 2

- MAKE AN EDUCATION PLAN WITH YOUR ADVISOR
- APPLY FOR BBCC FOUNDATION SCHOLARSHIPS

QUARTER 3

- MEET WITH YOUR ADVISOR

QUARTER 4

- UPDATE YOUR EDUCATION PLAN WITH YOUR ADVISOR

QUARTER 5

- APPLY FOR GRADUATION (AFTER ENROLLING IN YOUR FINAL QUARTER OF CLASSES)

QUARTER 6

- ORDER CAP AND GOWN
- ATTEND GRADUATION!
- EXPLORE EMPLOYMENT OPPORTUNITIES

Career Outlook

Manufacturing and Process Technology provides students the ability to specialize their training to work in a variety of industry settings in our area including manufacturing facilities, data centers, food or chemical processing plants, and other businesses with need for regular facility or equipment maintenance.

Future Education Opportunities

This degree prepares students to pursue the Bachelor or Applied Science - Applied Management at Big Bend Community College.

Find Out More

(509) 793-2265; manufacturing@bigbend.edu

<https://www.bigbend.edu/academics/manufacturing-and-process-technology/>



Students are required to purchase tools and safety equipment.

Length of Program

90+ credits = 6 quarters* if you take 14-16 credits each quarter.

*Your specific route may take longer than 6 quarters depending on the number of credits you take each quarter and where you start in your math and English pathways.

Which Quarter Can I Begin?

The 2-year pathway starts in the Fall quarter, though courses may be started any quarter, this will extend time to degree.

Program Modality

This program can be completed on campus or hybrid. Courses are offered on-campus or hybrid (part on-campus, part online)

Helpful Hints

- Work closely with your advisor for program planning!

OPPORTUNITY FOR FREE \$\$\$

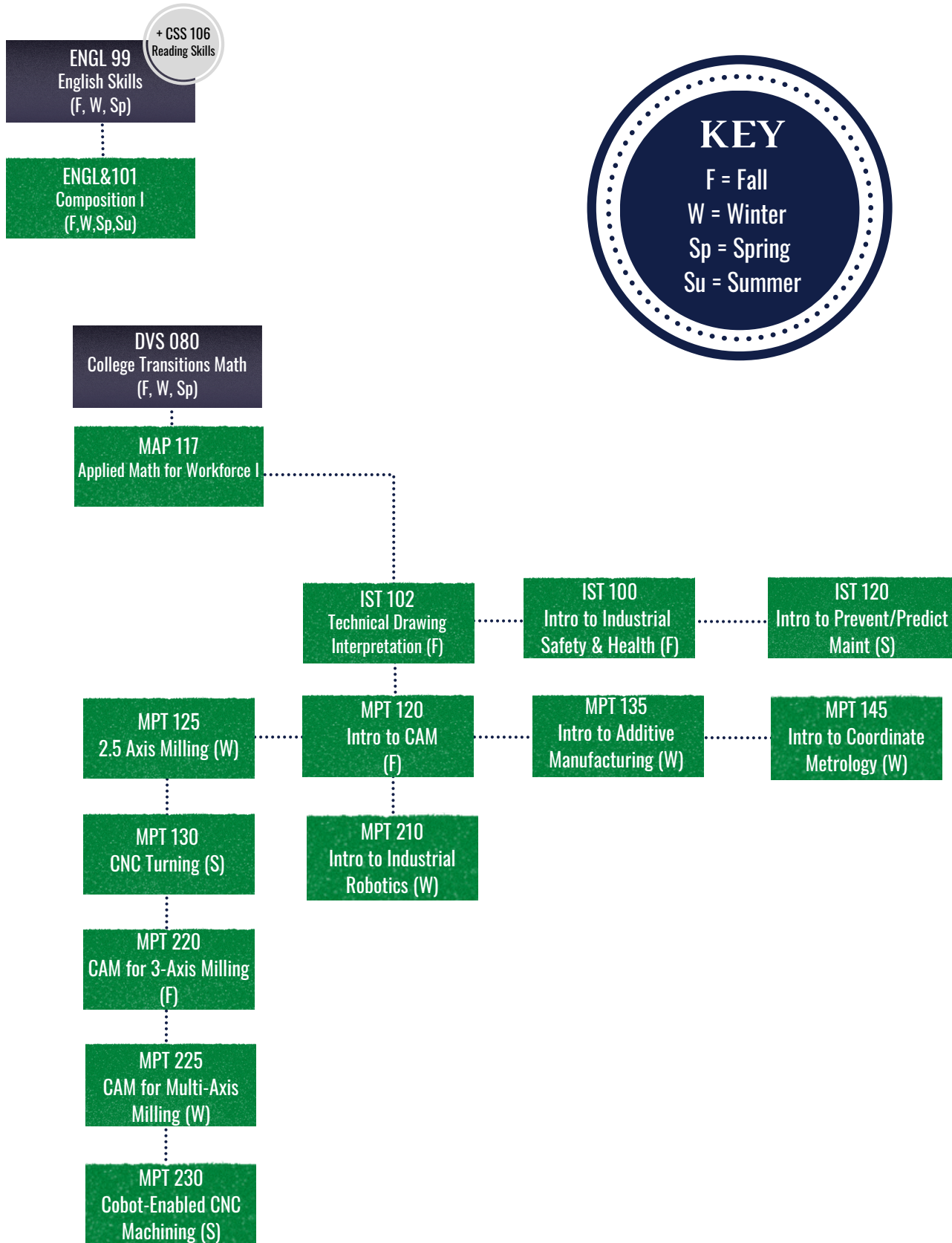
Workforce Education Services provides additional financial assistance for tuition and fees, books, tools, bus passes, and emergency support.

See if you qualify here!



Manufacturing & Process Technology Pre-Requisite Flow Chart

Start by talking with an advisor to determine which courses to take first based on your placement scores.



CERTIFICATE OPTIONS

MANUFACTURING & PROCESS TECHNOLOGY

Maintenance Mechanics Certificate of Achievement

Credits

- BIM 109A: Internet Communications..... 1
- BIM 180A: Introduction to Microsoft Office:..... 2
- CMST& 220: Public Speaking OR
CMST& 210: Interpersonal Communication..... 5
- ENGL&101: Composition I 5
- FAD 150: Industrial First Aid..... 2
- IST 107: Industrial Electricity and Motor Control..... 5
- IST 120: Introduction to Preventive/Predictive
Maintenance..... 3
- IST 170: Introduction to Instrumentation and
Measurement..... 5
- MAP 117: Math for Workforce..... 5
- MPT 140: Introduction to Industrial Internet of Things
(IIoT), SCADA(Supervisory Control and Data
Acquisition)..... 3
- PSYC& 100: General Psychology OR
SOC& 101: Intro to Sociology..... 5
- Advisor Approved MPT Elective..... 5

Total Credits: 59+

Coordinate Metrology Certificate of Accomplishment

Credits

- IST 102: Technical Drawing Interpretation..... 3
- MPT 120: Intro to CAM
(Computer Aided Manufacturing)..... 5
- MPT 145: Intro to Coordinate Metrology..... 3

Total Credits: 15

Machining Certificate of Accomplishment

Credits

- MPT 120: Intro to CAM (Computer Aided
Manufacturing)..... 5
- MPT 125: 2.5 Axis Milling..... 5
- MPT 130: CNC Turning..... 5

Total Credits: 15

Additive Manufacturing Certificate of Accomplishment

Credits

- IST 102: Technical Drawing Interpretation..... 3
- MPT 120: Intro to CAM
(Computer Aided Manufacturing)..... 5
- MPT 135: Introduction to Additive Manufacturing.... 3

Total Credits: 11

Multi-Axis Machining Certificate of Accomplishment

Credits

- MPT 120: Intro to CAM (Computer Aided
Manufacturing) 5
- MPT 125: 2.5 Axis Milling..... 5
- MPT 130: CNC Turning..... 5
- MPT 220: CAM for 3-Axis Milling..... 5
- MPT 225: CAM for Multi-Axis Milling..... 5

Total Credits: 25

My Education Plan

Name: _____

ID #: _____

 Quarter/Year	Quarter/Year
Quarter/Year	Quarter/Year
Quarter/Year	Quarter/Year

My Education Plan

Name: _____

ID #: _____

Quarter/Year	Quarter/Year
Quarter/Year	Quarter/Year
Quarter/Year	Quarter/Year



Suggested Schedule to Earn the AAS for the Computer Aided Manufacturing (CAM) Emphasis

If the classes listed below don't fit your schedule or you're planning to start after fall quarter, work with an advisor to develop your specialized education plan.

Year One

Fall	Credits
• IST 100: Intro to Industrial Safety & Health.....	3
• IST 102: Technical Drawing Interpretation.....	3
• MAP 117: Applied Math for Workforce Programs I.....	5
• MPT 120: Intro to CAM (Computer Aided Manufacturing).....	5
Winter	
• BIM 109A: Outlook/Internet.....	1
• BIM 180A: Microsoft Office (Word, Excel).....	2
• MPT 125: 2.5 Axis Milling.....	5
• MPT 135: Introduction to Additive Manufacturing.....	3
• MPT 145: Intro to Coordinate Metrology.....	5
Spring	
• MPT 130: CNC Turning.....	5
• MPT 140: Intro to IIOT and SCADA.....	3
• Specified Elective: Select with advisor.....	5

Year Two

Fall	
• CMST&210: Interpersonal Communication OR CMST&220: Public Speaking.....	5
• ENGR& 112: Engineering Graphics II.....	5
• MPT 220: CAM for 3-Axis Milling.....	5
Winter	
• ENGL&101: Composition I	5
• MPT 210: Introduction to Industrial Robotics.....	5
• MPT 225: CAM for Multi-Axis Milling.....	5
Spring	
• FAD 150: Industrial First Aid.....	2
• MPT 230: Cobot-Enabled CNC Machining.....	3
• PSYC&100: General Psychology OR SOC&101: Intro to Sociology.....	5
• Specified Elective: Select with advisor.....	5