



CRIMINAL JUSTICE AAS-T



Arts, Education, and Human Services

START here

Suggested Schedule to Earn an Associate Degree

If the classes listed below don't fit your schedule or you're planning to start after fall quarter, work with an advisor to develop your specialized education plan.

Year One

| Fall | Credits |
|--|---------|
| • CJ&101 Intro to Criminal Justice  | 5 |
| • ENGL&101 English Composition I  | 5 |
| • MATH&107 Math in Society OR MATH& 146 Statistics..... | 5 |
| Winter | |
| • CMST&210 Interpersonal Communications OR CMST&220 Public Speaking..... | 5 |
| • ENGL& 235 Technical Writing | 5 |
| • PSYC&100 General Psychology OR SOC&101: Intro to Sociology..... | 5 |
| Spring | |
| • CJ& 105 Introduction to Corrections | 5 |
| • CJ 217 Advanced Report Writing..... | 3 |
| • CJ Approved Elective..... | 5 |
| • FAD 150 Industrial First Aid..... | 2 |
| • PEH Activity Course..... | 1 |

Year Two

| | |
|---|----|
| Fall | |
| • CJ 210 Introduction to American Policing..... | 5 |
| • CJ Approved Electives..... | 10 |
| • PEH Activity Course..... | 1 |
| Winter | |
| • CJ&110 Criminal Law..... | 5 |
| • CJ&106 Juvenile Justice..... | 5 |
| • CJ Approved Electives..... | 5 |
| Spring | |
| • CJ Approved Electives..... | 12 |
| • PEH Activity Course..... | 1 |

Total Credits Required: 90

Criminal Justice Program Approved Electives:

| | | | |
|--|-----|--|---|
| BIOL& 100 Survey of Biology | 5 | PHIL 211 – Ethics for Criminal Justice | 5 |
| CHEM& 105 Chemical Concepts | 5 | POLS& 203 – International Relations | 5 |
| CHEM& 121 Intro to Chemistry | 5 | PSYC 225 – Psychology and the Legal System | 5 |
| CJ 198 – Special Topics | 1-2 | PSYC&200 – Lifespan Psychology | 5 |
| CJ 203 – Leadership and Administration | 5 | REL 201 – World Religions (or REL 210) | 5 |
| CJ 209 – Police Psychology | 5 | REL 211 – Religion in America (or REL 210) | 5 |
| CJ 215 – Criminal Investigations | 5 | SOC& 101 Introduction to Sociology..... | 5 |
| CJ 295 – Work-Based Learning | 1 | SOC&201 – Social Problems | 5 |
| HSEM 102 – Introduction to HSEM | 5 | UMS 107 – Commercial UAS Remote Pilot | 2 |
| HSEM 157 – Public Information Officer | 2 | UMS 112 – UAS Ground School I | 5 |
| NUTR& 101 – Nutrition | 5 | UMS 142 – UAS Flight Lab | 6 |
| PHIL 210 – Ethics | 5 | | |



TO DO'S:

QUARTER 1

- APPLY FOR FAFSA OR WASFA FOR NEXT YEAR
- SET UP YOUR BANKMOBILE ACCOUNT
- GET FAMILIAR WITH YOUR CTCLINK STUDENT HOMEPAGE
- MEET WITH YOUR ADVISOR

QUARTER 2

- MAKE AN EDUCATION PLAN WITH YOUR ADVISOR
- APPLY FOR BBCC FOUNDATION SCHOLARSHIPS

QUARTER 3

- MEET WITH YOUR ADVISOR
- SEEK OUR JOB SHADOWING OPPORTUNITIES OR INTERNSHIPS

QUARTER 4

- UPDATE YOUR EDUCATION PLAN WITH YOUR ADVISOR

QUARTER 5

- APPLY FOR GRADUATION (AFTER ENROLLING IN YOUR FINAL QUARTER OF CLASSES)

QUARTER 6

- ORDER CAP AND GOWN
- ATTEND GRADUATION!
- EXPLORE EMPLOYMENT OPPORTUNITIES

Career Outlook

The Criminal Justice Workforce Program is designed to develop the proficiencies and skills necessary to obtain entry-level employment in Criminal Justice related career paths. Job possibilities after completing this degree include but are not limited to entry-level police officer, corrections officer in a prison or jail, or other criminal justice job that requires a 2-year degree or less.

Future Education Opportunities

While this degree is not a transferrable degree, it does begin to prepare students to continue their education with Bachelors degrees in Criminal Justice or Law and Justice. Students may also choose to pursue Master's or Doctoral degrees in Criminal Justice, Law and Justice, or attend Law School.

Find Out More

Kaja Englund; kajae@bigbend.edu

<https://www.bigbend.edu/academics/criminal-justice/>

Length of Program

90 credits = 6 quarters* if you take 15 credits each quarter.

*Your specific route may take longer than 6 quarters depending on the number of credits you take each quarter and where you start in your math and English pathways.

Which Quarter Can I Begin?

Fall, Winter, Spring, Summer

Program Modality

This program is offered on campus or hybrid. Courses are offered on-campus, online, or hybrid (part on-campus, part online).

Helpful Hints

- Meet with your advisor each quarter to make sure you are on track!
- Instead of 3, 1-credit PEH activity courses you can take PEH 100 (3-credits)

OPPORTUNITY FOR FREE \$\$\$

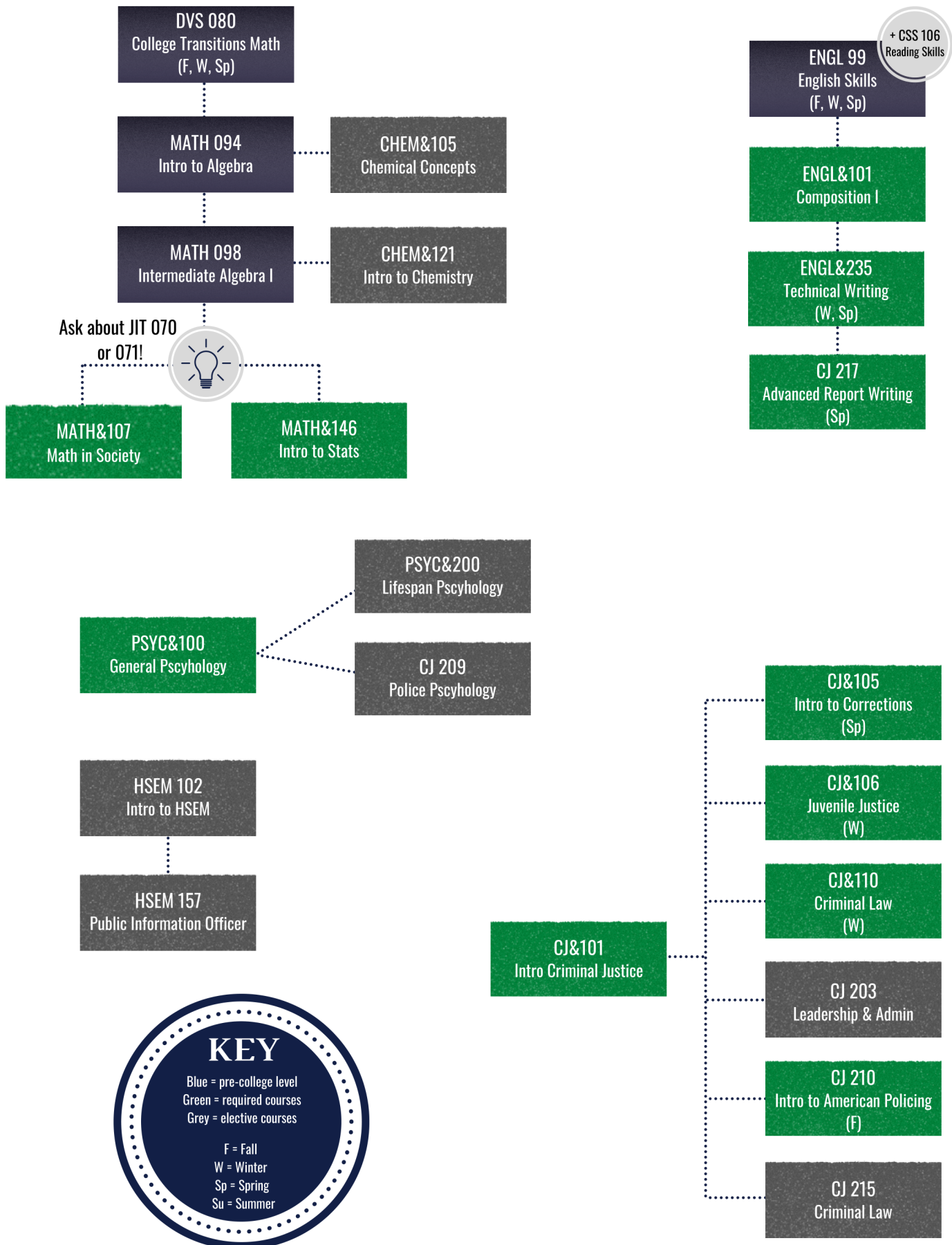
Workforce Education Services provides additional financial assistance for tuition and fees, books, tools, bus passes, and emergency support.

See if you qualify here!



Criminal Justice Pre-Requisite Flow Chart

Start by talking with an advisor to determine which courses to take first based on your placement scores.



My Education Plan

Name: _____

ID #: _____

| | |
|--|--------------|
|  Quarter/Year | Quarter/Year |
| Quarter/Year | Quarter/Year |
| Quarter/Year | Quarter/Year |

My Education Plan

Name: _____

ID #: _____

Quarter/Year

Quarter/Year

Quarter/Year

Quarter/Year

Quarter/Year

Quarter/Year

