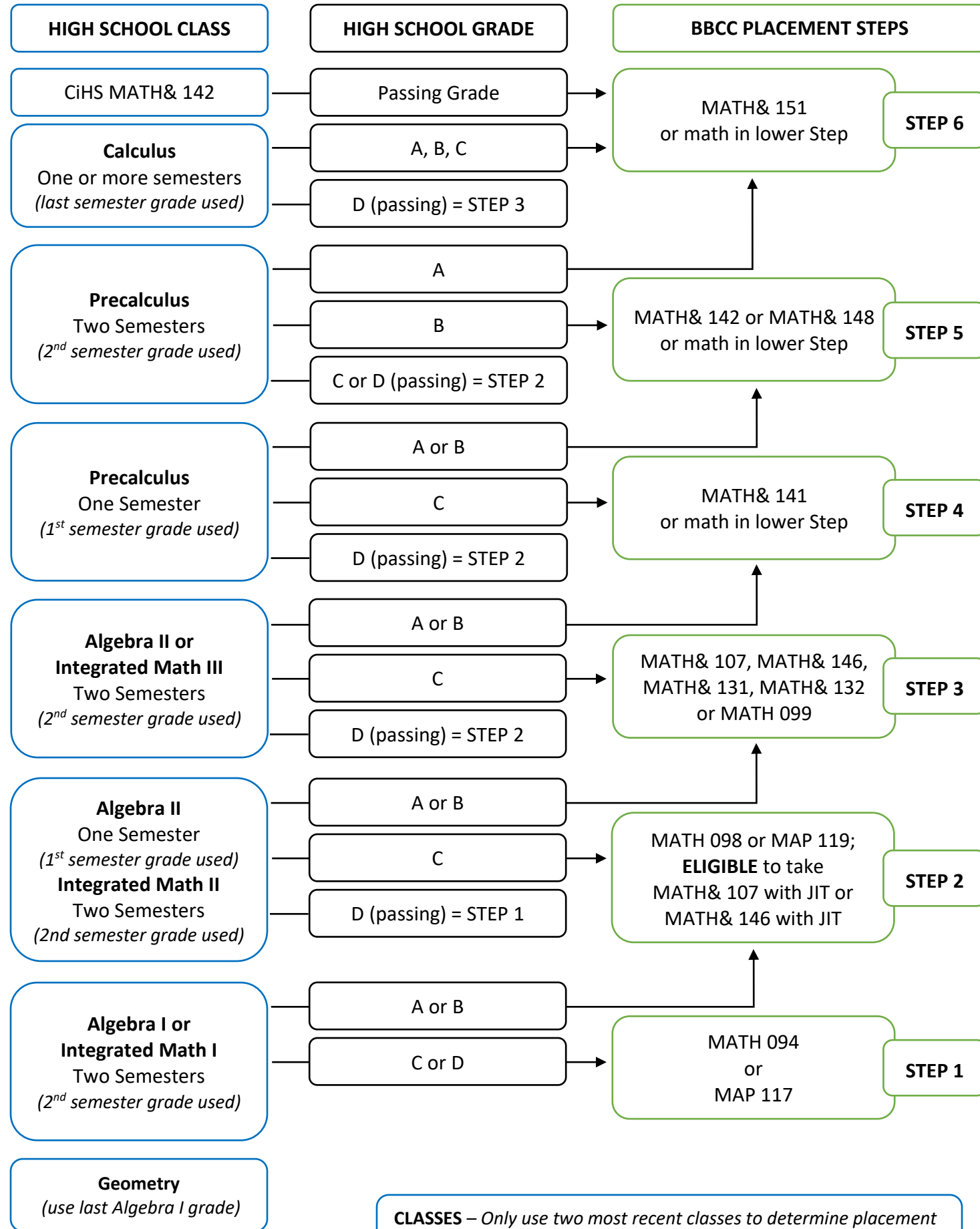


BBCC Math Placement



CLASSES – Only use two most recent classes to determine placement
GRADES – Only use grades earned in the last two years

Bridge to College
Financial Algebra
Consumer Finance
Applied Statistics
(2nd semester grade used)

- BBCC COURSE NUMBER & TITLE**
- MATH& 151 – Calculus I
 - MATH& 148 – Business Calculus
 - MATH& 142 – Precalculus II
 - MATH& 141 – Precalculus I
 - MATH& 146 - Statistics
 - MATH& 132 – Math for Elem Ed. 2
 - MATH& 131 – Math for Elem Ed. 1
 - MATH& 107 – Math in Society
 - MATH 099 – Intermediate Algebra II
 - MATH 098 – Intermediate Algebra I
MAP 119 – Applied Math for Workforce Education Programs II
 - MATH 094 – Intro to Algebra
MAP 117 – Applied Math for Workforce Education Programs I
 - JIT = Just-In-Time (Support Class)

