

ASSOCIATE IN BIOLOGY DTA/MRP

Biology

START here



Requirements to Earn this Associate Degree

Work with an advisor to develop your specialized education plan.

Credits

Communication Skills: 10 credits

- ENGL&101: English Composition I5
- ENGL&102: English Composition II OR ENGL&235: Technical Writing.....5

Quantitative Skills: 5 credits (SQR)

- MATH&151: Calculus I5

Humanities: 15 credits (HU, HP)

[ART, CMST, ENGL, FREN, GERM, HUM, MUSC, PHIL, REL, SPAN]

- _____ 5
- _____ 5
- _____ 5

Social Science: 15 credits (SS)

[ANTH, CJ, ECON, HIST, POLS, PSYC, SOC]

- _____ 5
- _____ 5
- _____ 5

Natural Science: 30 credits (LS)

- BIOL&221: Majors Ecology/Evolution.....5
- BIOL&222: Majors Cell/Molecular.....5
- BIOL&223: Majors Organismal Phys.....5

AND

- CHEM&161: General Chemistry with Lab I5
- CHEM&162: General Chemistry with Lab II.....5
- CHEM&163: General Chemistry with Lab III.....5

Additional Electives: 15 credits

- MATH or PHYS: Select with Advisor.....5
- MATH or PHYS: Select with Advisor.....5
- MATH or PHYS: Select with Advisor.....5

Total Credits Required: 90

TO DO:

Stay on track with this checklist!

TO DO'S:

QUARTER 1

- APPLY FOR FAFSA OR WASFA FOR NEXT YEAR
- SET UP YOUR BANKMOBILE ACCOUNT
- GET FAMILIAR WITH YOUR CTCLINK STUDENT HOMEPAGE
- MEET WITH YOUR ADVISOR

QUARTER 2

- MAKE AN EDUCATION PLAN WITH YOUR ADVISOR
- APPLY FOR BBC FOUNDATION SCHOLARSHIPS

QUARTER 3

- MEET WITH YOUR ADVISOR

QUARTER 4

- UPDATE YOUR EDUCATION PLAN WITH YOUR ADVISOR
- APPLY TO TRANSFER INSTITUTIONS
- APPLY FOR FAFSA OR WASFA FOR NEXT YEAR

QUARTER 5

- APPLY FOR GRADUATION (AFTER ENROLLING IN YOUR FINAL QUARTER OF CLASSES)

QUARTER 6

- ORDER CAP AND GOWN
- ATTEND GRADUATION!

Career Outlook

Completion of the Associate in Biology degree opens the door to a wide variety of choices—from the health sciences to environmental technology, from biomedical research to wildlife biology. (The range of possibilities is limited only by a student's own interests, aptitudes, and imagination! The biology program provides courses to meet a variety of student needs.)

Future Education Opportunities

The Biology DTA represents the broad knowledge generally acquired in the first two years of a four-year program leading to a Bachelor of Science degree. When students earn the Biology DTA, they may transfer to a baccalaureate institution within the state of Washington with assurance they they have satisfied all or most of the basic requirements.

Find Out More

christyw@bigbend.edu 509.793.2156
mariahw@bigbend.edu 509.793.2149

Length of Program

90 credits = 6 quarters* if you take 15 credits each quarter.

*Your specific route may take longer than 6 quarters depending on the number of credits you take each quarter and where you start in your math and English pathways.

Which Quarter Can I Begin?

The 2-year pathway starts Fall quarter. While courses may be started any quarter, this will extend time to degree completion.

Program Modality

This program can be completed on campus or hybrid. Courses are offered on-campus, online, or hybrid (part on-campus, part online).

Helpful Hints

- Cumulative GPA must be 2.0 or higher
- Meet with your advisor each quarter to make sure you are on track!

SCHOLARSHIP INFORMATION

Central Washington University

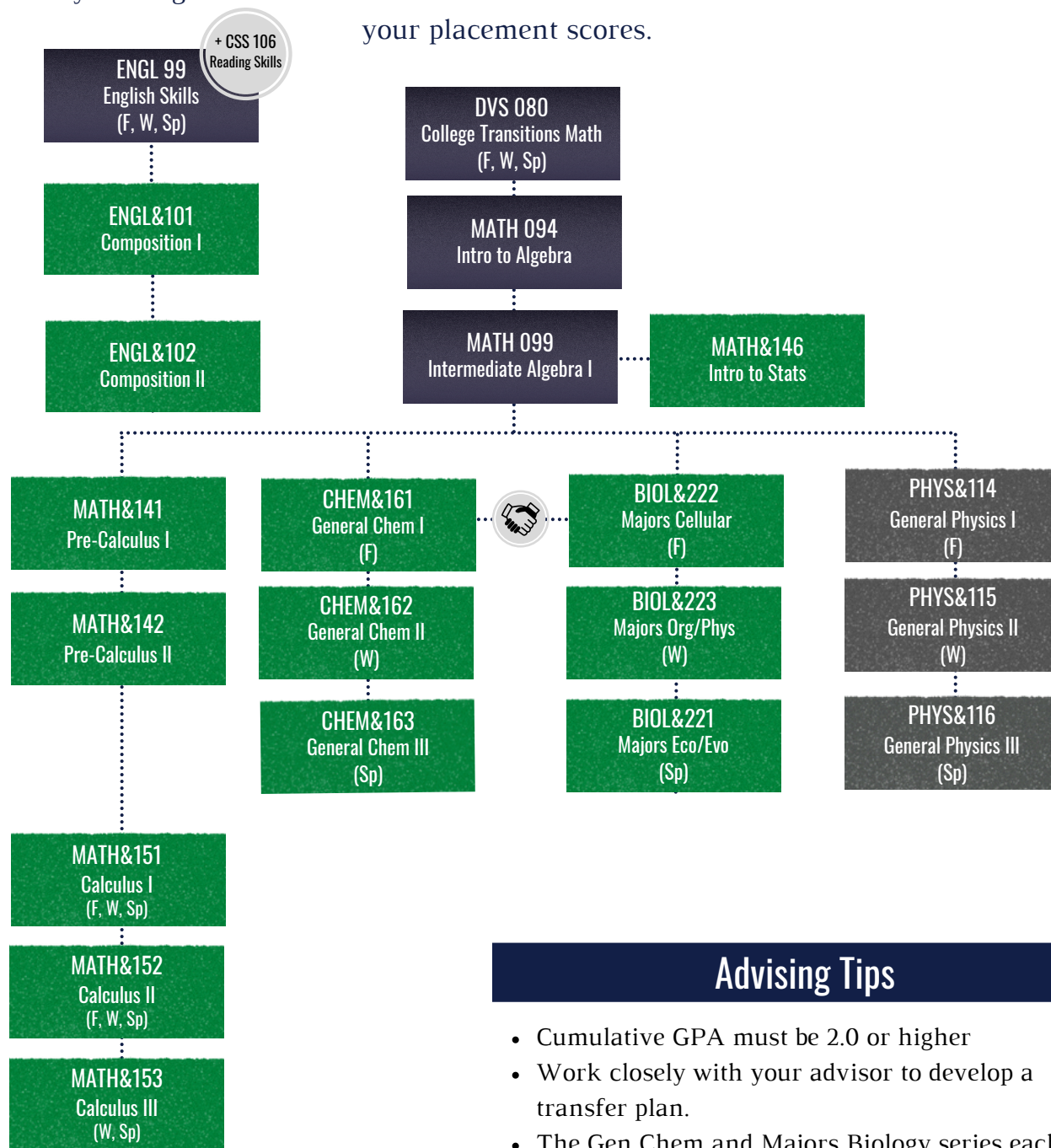
Washington State University

Eastern Washington University

University of Washington

Biology DTA Pre-Requisite Flow Chart

Start by talking with an advisor to determine which courses to take first based on your placement scores.



Advising Tips

- Cumulative GPA must be 2.0 or higher
- Work closely with your advisor to develop a transfer plan.
- The Gen Chem and Majors Biology series each start in the fall and stretch through the spring.
- Courses Recommended for WA State Schools
 - CWU: MATH&141, 142, PHYS&114, 115, 116
 - WSU: PHYS&114, 115, 116
 - EWU: MATH&146, PHYS&114, 115, 116

Suggested Schedule to Earn this Associate Degree

If the classes listed below don't fit your schedule or you're planning to start after fall quarter, work with an advisor to develop your specialized education plan.

Year One

| Fall | Credits |
|---|----------------|
| • CHEM&161: General Chem I..... | 5 |
| • MATH&151: Calculus I..... | 5 |
| • Social Science Breadth: Select with advisor..... | 5 |
| Winter | |
| • CHEM&162: General Chem II..... | 5 |
| • ENGL&101: English Composition I..... | 5 |
| • Humanities Breadth: Select with advisor..... | 5 |
| Spring | |
| • CHEM&163: General Chem III..... | 5 |
| • ENGL&102: English Composition II OR ENGL&235: Technical Writing..... | 5 |
| • Social Science Breadth: Select with advisor..... | 5 |

Year Two

| | |
|---|---|
| Fall | |
| • Social Science Breadth: Select with advisor..... | 5 |
| • BIOL&221: Majors Ecology/Evolution..... | 5 |
| • Additional Elective MATH or PHYS: Select with advisor..... | 5 |
| Winter | |
| • BIOL&222: Majors Cell/Molecular..... | 5 |
| • Humanities Breadth: Select with advisor..... | 5 |
| • Additional Elective MATH or PHYS: Select with advisor..... | 5 |
| Spring | |
| • BIOL&223: Majors Organismal Phys..... | 5 |
| • Humanities Breadth: Select with advisor..... | 5 |
| • Additional Elective MATH or PHYS: Select with advisor..... | 5 |

My Education Plan

Name: _____

ID #: _____

| | |
|--|--------------|
|  Quarter/Year | Quarter/Year |
| Quarter/Year | Quarter/Year |
| Quarter/Year | Quarter/Year |

My Education Plan

Name: _____

ID #: _____

| | |
|--------------|--------------|
| Quarter/Year | Quarter/Year |
| Quarter/Year | Quarter/Year |
| Quarter/Year | Quarter/Year |

