



# AGRICULTURE SCIENCE - WSU TRANSFER AAS-T

## Field Crop Management



### SUGGESTED Schedule to Earn an Associate Degree

If the classes listed below don't fit your schedule or you're planning to start after fall quarter, work with an advisor to develop your specialized education plan.

#### Year One

Fall	Credits
• AGR 101: Introduction to Ag Industry & Careers.....	2
• AGR 261: Plant Science.....	5
• ENGL& 101: Composition I.....	5
• MATH& 141: Pre-Calculus I.....	5
<b>Winter</b>	
• ART& 100: Art Appreciation.....	5
• BOT 130: Botany.....	5
• FAD 150: Industrial First Aid.....	2
• MATH& 146: Introduction to Statistics.....	5
<b>Spring</b>	
• ECON& 201: Micro Economics.....	5
• HIST& 116: Western Civilization I	
HIST& 118: Western Civilization III.....	5
• MATH& 142: Pre-Calculus II.....	5
<b>Summer</b>	
• AGR 295: Work-based Learning Internship.....	4
• AGR 297: Work-based Learning Seminar.....	1

#### Year Two

Fall	
• AGR 241 Farm & Ranch Management.....	5
• ANTH& 100 Survey of Anthropology.....	5
• CHEM& 161 General Chemistry .....	5
<b>Winter</b>	
• AGR 212 Ag Safety & Pesticides.....	5
• AGR 263 Soils.....	5
• CHEM& 162 General Chemistry.....	5
• CMST& 220 Public Speaking.....	5
<b>Spring</b>	
• AGR 251 Ecologically Based Pest Management.....	5
• CHEM& 163 General Chemistry.....	5
• PSYC& 100 General Psychology	
SOC& 101 Introduction to Sociology.....	5

**Total Credits Required: 105**

**Customized Articulation Agreements are intended to eliminate duplication of coursework and better integrate programs to ensure a more efficient pathway to graduation. This agreement provides Big Bend Community College students with a more efficient transfer pathway to Washington State University (WSU).**



#### TO DO'S:

##### QUARTER 1

- APPLY FOR FAFSA OR WASFA FOR NEXT YEAR
- SET UP YOUR BANKMOBILE ACCOUNT
- GET FAMILIAR WITH YOUR CTCLINK STUDENT HOMEPAGE
- MEET WITH YOUR ADVISOR

##### QUARTER 2

- MAKE AN EDUCATION PLAN WITH YOUR ADVISOR
- APPLY FOR BBCC FOUNDATION SCHOLARSHIPS
- IDENTIFY POTENTIAL TRANSFER SCHOOLS
- CONSIDER SUMMER UNDERGRADAUTE RESEARCH PROGRAMS

##### QUARTER 3

- DECIDE ON TRANSFER SCHOOLS
- APPLY TO SUMMER UNDERGRADAUTE RESEARCH PROGRAMS

##### QUARTER 4

- UPDATE YOUR EDUCATION PLAN WITH YOUR ADVISOR
- APPLY FOR FAFSA OR WASFA FOR NEXT YEAR

##### QUARTER 5

- APPLY FOR GRADUATION (AFTER ENROLLING IN YOUR FINAL QUARTER OF CLASSES)
- SUBMIT TRANSFER APPLICATIONS

##### QUARTER 6

- ORDER CAP AND GOWN
- ATTEND GRADUATION!



## Career Outlook

Career opportunities include Farm Managers, Food Scientists, Agronomists, Ag Lab Researchers, Soil Test Personnel, and jobs with the USDA, Fish and Wildlife, the Bureau of Reclamation, the Department of Interior, Extension agencies, and more!

## Future Education Opportunities

This AAS-T degree program is designed to give students a strong foundation in the agricultural fields and aligns with the specific WSU majors within the Integrated Plant Sciences and Agricultural Food Systems degrees. Students completing this degree will be prepared to begin upper division work in agriculture at WSU.

Students can also pursue advanced Ag degrees at UW, University of Oregon, Boise State, University of Idaho, and EWU.

## Find Out More

Ethan Tonnemaker; ethant@bigbend.edu; 509.793.2117  
<https://www.bigbend.edu/academics/agriculture/>

## Length of Program

105 credits = 7 quarters\* if you take 15-20 credits each quarter.

\*Your specific route may take longer than 7 quarters depending on the number of credits you take each quarter and where you start in your math and English pathways.

## Which Quarter Can I Begin?

The 2-year pathway starts in the Fall quarter, though courses may be started any quarter, this will extend time to degree.

## Program Modality

This program is offered on campus or hybrid. Courses are offered on-campus, online, or hybrid (part on-campus, part online).

## Helpful Hints

- Meet with your advisor each quarter to make sure you are on track!

# SCHOLARSHIP INFORMATION

[Central Washington University](#)

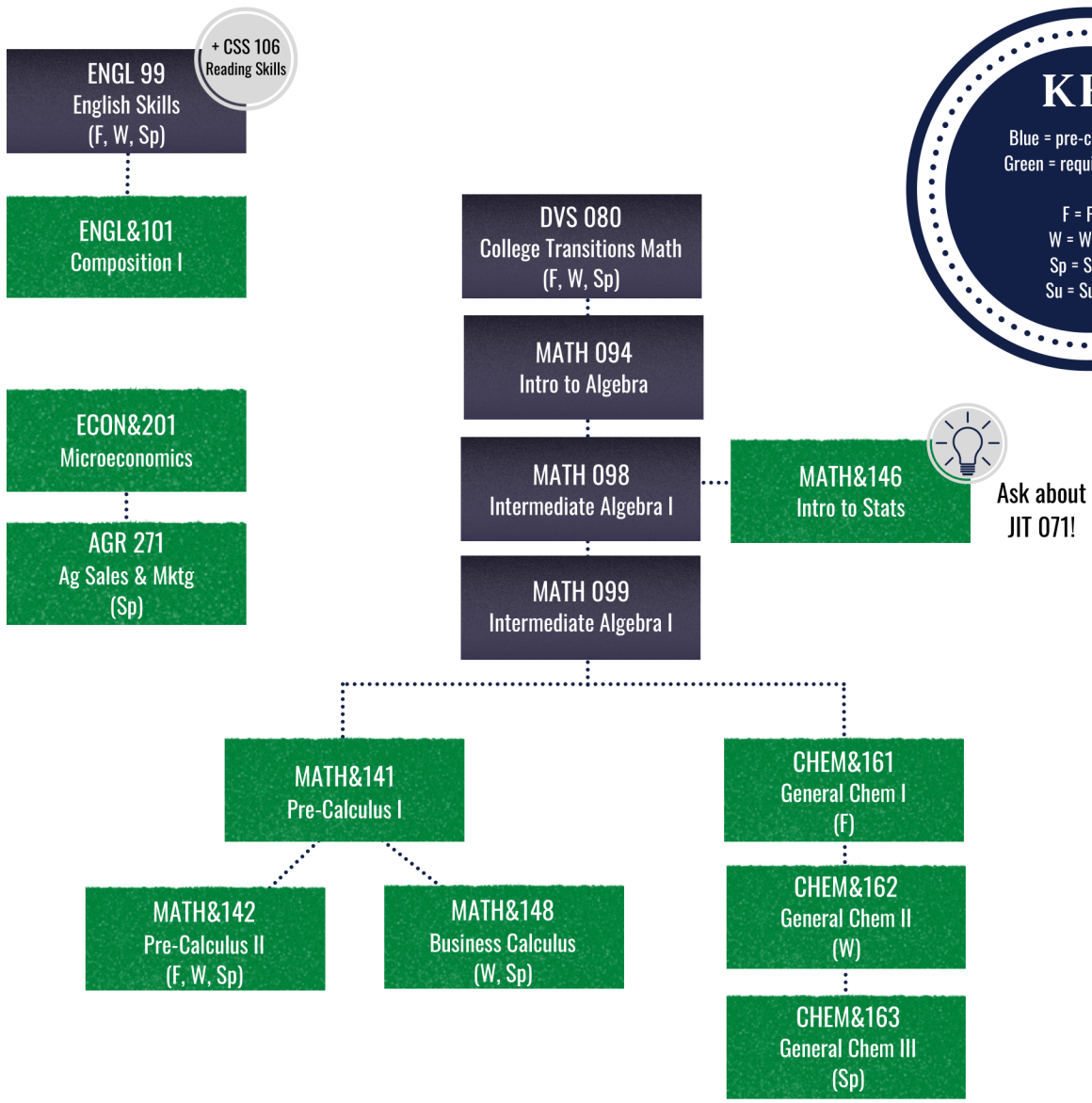
[Washington State University](#)

[Eastern Washington University](#)

[University of Washington](#)

# Agriculture Pre-Requisite Flow Chart

Start by talking with an advisor to determine which courses to take first based on your placement scores.



**Limited Availability Courses w/out Prerequisites**

- AGR 101 (F)
- AGR 241 (F)
- AGR 261 (F)
- AGR 263 (W)
- BOT 130 (W)
- AGR 295 and 297 (Su) = paid or volunteer experience supervised by the employer and the Ag instructor

**Advising Tips**

- Take MATH 099 in your first year to be prepared for the Gen Chem series in your second year
- The Gen Chem series starts each year in the fall and stretches through the spring

# My Education Plan

Name: \_\_\_\_\_

ID #: \_\_\_\_\_

 Quarter/Year	Quarter/Year
Quarter/Year	Quarter/Year
Quarter/Year	Quarter/Year

# My Education Plan

Name: \_\_\_\_\_

ID #: \_\_\_\_\_

Quarter/Year	Quarter/Year
Quarter/Year	Quarter/Year
Quarter/Year	Quarter/Year

