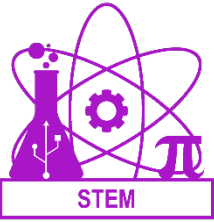


BIG BEND COMMUNITY COLLEGE

STEM

MEDICAL SIMULATION TECHNICIAN (AAS-T)

NAME:



This is an example course sequence for students interested in earning a Medical Simulation Technician degree. It does not represent a contract, nor does it guarantee course availability. If this advising map is followed as outlined, you will earn an Associate in Applied Science-Transfer (AAS-T) Degree as a Simulation Technician.

Due to the growing use of technology in healthcare, medical simulation has become an increasingly critical education tool. The Simulation Technician (SIM Tech) program prepares students with the knowledge, skills, and abilities to develop, implement, and troubleshoot simulation equipment, scenarios, and training sessions. Completion of this program leads to positions in hospitals, colleges, and other environments. The AAS-T degree will prepare students to program, maintain, repair, and provide training for simulation equipment.

ENTRY REQUIREMENTS

- Complete Admissions and Placement processes
- Meet with SIM advisor prior to enrolling

Students entering most healthcare professions programs will be required to present documentation of health history and vaccination status, undergo annual tuberculosis screening, submit to a background check, submit to initial and random drug screening, and undergo finger printing prior to licensing with the state of Washington. Students should consult with a healthcare advisor if any of these requirements are a concern.

DEGREE REQUIREMENTS

Related Instruction Requirements (27 Credits)

- | | |
|---|---|
| <ul style="list-style-type: none"> <input type="checkbox"/> CMST& 210 – Interpersonal Communications (5)
OR CMST& 220 – Public Speaking (5) <input type="checkbox"/> ENGL& 101 – English Composition I (5) <input type="checkbox"/> ENGL& 235 – Technical Writing (5) | <ul style="list-style-type: none"> <input type="checkbox"/> FAD 150 – Industrial First Aid (2) <input type="checkbox"/> MATH& 141 – Pre-Calculus (5) <input type="checkbox"/> PSYC& 100 – General Psychology (5) |
|---|---|

Program Major Requirements (66 Credits Total)

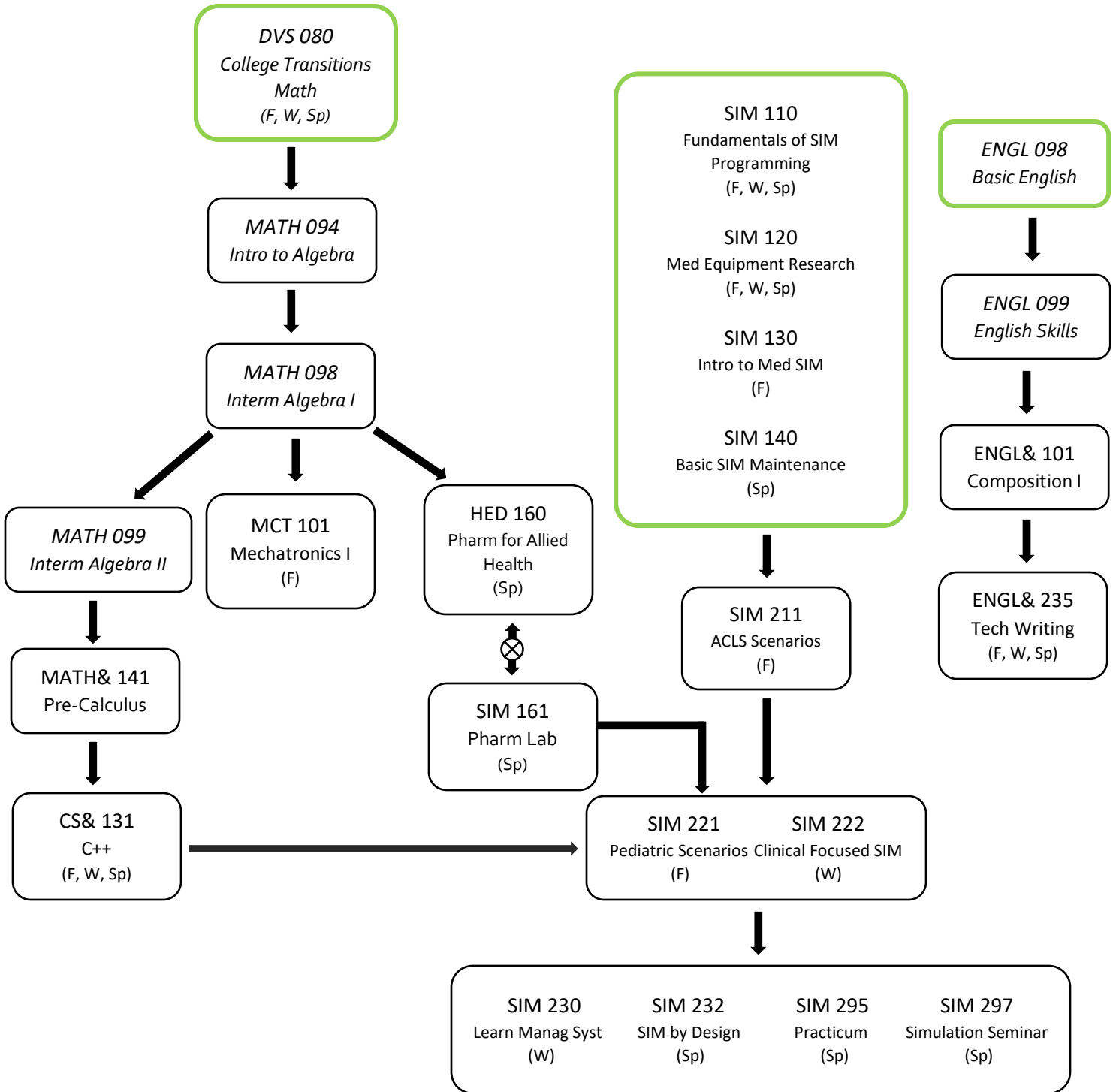
- | | |
|--|--|
| <ul style="list-style-type: none"> <input type="checkbox"/> BIOL& 170 – Human Biology (5) <input type="checkbox"/> CS& 131 – Computer Science 1: C++ (5) <input type="checkbox"/> HED 119 – Medical Terminology (5) <input type="checkbox"/> HED 160 – Pharmacology for Allied Health (3) <input type="checkbox"/> MCT 101 – Mechatronics I (5) <input type="checkbox"/> MCT 110 – Intro to Mechatronic Applications (3) <input type="checkbox"/> SIM 110 – Fundamentals of SIM Programming (2) <input type="checkbox"/> SIM 120 – Medical Equipment Research (2) <input type="checkbox"/> SIM 130 – Intro to Medical SIM (Lab) (5) | <ul style="list-style-type: none"> <input type="checkbox"/> SIM 140 – Basic SIM Maintenance (Lab) (5) <input type="checkbox"/> SIM 161 – Pharmacology Lab (1) <input type="checkbox"/> SIM 211 – ACLS Scenarios (Lab) (5) <input type="checkbox"/> SIM 221 – Pediatric Scenarios (5) <input type="checkbox"/> SIM 222 – Clinical Focused Simulation (3) <input type="checkbox"/> SIM 230 – Learning Management Systems (5) <input type="checkbox"/> SIM 232 – SIM by Design (3) <input type="checkbox"/> SIM 295 – Practicum in the Community (3) <input type="checkbox"/> SIM 297 – Simulation Seminar (1) |
|--|--|

93 TOTAL DEGREE CREDITS

SID:

MEDICAL SIMULATION TECHNICIAN PRE-REQUISITE FLOW CHART

Start by talking with your assigned advisor to determine which courses to take first based on your placement scores.



KEY

STARTING POINT of SEQUENCE

PRE-requisite

CO-requisite

[F = fall W = winter Sp = spring Su = summer]

Program Courses WITHOUT PRE-requisites

BIOL& 170 Human Biology (W)

CMST& 210 Interpersonal Communication

OR

CMST& 220 Public Speaking

FAD 150 First Aid/CPR

HED 119 Medical Terminology

MCT 110 Intro to Mechatronic Applications (F)

PSYC& 100 General Psychology

MEDICAL SIMULATION TECHNICIAN QUARTERLY PROGRAM PLAN (YEAR ONE)

FALL (18 credits)	WINTER (16 credits)	SPRING (14 credits)
HED 119 (5) MCT 101 (5) MCT 110 (3) SIM 130 (5)	BIOL& 170 (5) FAD 150 (2) ENGL& 101 (5) SIM 110 (2) SIM 120 (2)	HED 160 (3) MATH& 141 (5) SIM 140 (5) SIM 161 (1)

ADVISING

FALL	WINTER	SPRING
<input type="checkbox"/> BCC Foundation scholarship app <input type="checkbox"/> Fill out FAFSA or WAFSA for next year <input type="checkbox"/> Meet with your advisor	<input type="checkbox"/> Assess program plan with advisor	<input type="checkbox"/> Assess program plan with advisor

QUARTERLY REGISTRATION PLANNING

QUARTER: FALL WINTER SPRING SUMMER				REGISTRATION ACCESS CODE:		
CLASS	TITLE	CREDITS	DAYS	TIME	ITEM #	

QUARTERLY REGISTRATION PLANNING

QUARTER: FALL WINTER SPRING SUMMER				REGISTRATION ACCESS CODE:		
CLASS	TITLE	CREDITS	DAYS	TIME	ITEM #	

QUARTERLY REGISTRATION PLANNING

QUARTER: FALL WINTER SPRING SUMMER				REGISTRATION ACCESS CODE:		
CLASS	TITLE	CREDITS	DAYS	TIME	ITEM #	

QUARTERLY REGISTRATION PLANNING

QUARTER: FALL WINTER SPRING SUMMER				REGISTRATION ACCESS CODE:		
CLASS	TITLE	CREDITS	DAYS	TIME	ITEM #	

MEDICAL SIMULATION TECHNICIAN QUARTERLY PROGRAM PLAN (YEAR TWO)

FALL (15 credits)			WINTER (18 credits)			SPRING (12 credits)		
CS& 131 (5) SIM 211 (5) SIM 221 (5)			CMST& 210 OR CMST& 220 (5) ENGL&235 (5) SIM 222 (3) SIM 230 (5)			PSYC& 100 (5) SIM 232 (3) SIM 295 (3) SIM 297 (1)		
ADVISING								
FALL			WINTER			SPRING		
<input type="checkbox"/> BCC Foundation scholarship app <input type="checkbox"/> Fill out FAFSA or WAFSA for next year <input type="checkbox"/> Meet with your advisor			<input type="checkbox"/> Assess program plan with advisor <input type="checkbox"/> Apply for practicum site <input type="checkbox"/> Apply for graduation			<input type="checkbox"/> Apply for CHSOS cert (ssih.org) <input type="checkbox"/> Gather recommendation letters		

QUARTERLY REGISTRATION PLANNING

QUARTER: FALL WINTER SPRING SUMMER				REGISTRATION ACCESS CODE:		
CLASS	TITLE	CREDITS	DAYS	TIME	ITEM #	

QUARTERLY REGISTRATION PLANNING

QUARTER: FALL WINTER SPRING SUMMER				REGISTRATION ACCESS CODE:		
CLASS	TITLE	CREDITS	DAYS	TIME	ITEM #	

QUARTERLY REGISTRATION PLANNING

QUARTER: FALL WINTER SPRING SUMMER				REGISTRATION ACCESS CODE:		
CLASS	TITLE	CREDITS	DAYS	TIME	ITEM #	

OPERATORS CERTIFICATE

REQUIRES an Associate's Degree or higher in order to complete the stand-alone certificate

- | | |
|---|---|
| <input type="checkbox"/> SIM 110 – Fundamentals of SIM Programming (2)
<input type="checkbox"/> SIM 130 – Intro to Medical SIM (Lab) (5)
<input type="checkbox"/> SIM 140 – Basic SIM Maintenance (Lab) (5) | <input type="checkbox"/> SIM 230 – Learning Management Systems (5)
<input type="checkbox"/> SIM 295 – Practicum in the Community (3) |
|---|---|

20 TOTAL CERTIFICATE CREDIT

Big Bend Community College
WORKFORCE EDUCATION PROGRAM REQUIREMENTS

Certificate of Achievement

Students working toward a Certificate of Achievement need to develop a program plan with the faculty advisor in their Workforce Education area of interest. The plan must include all related instruction components. The Certificate of Achievement is designed to provide recognition for the student who has not completed an Associate in Applied Science degree program.

Certificate of Accomplishment

Students working toward a Certificate of Accomplishment need to develop a program plan with the faculty advisor in their Workforce Education area of interest. The Certificate of Achievement is designed to provide recognition for the student who does not complete a Certificate of Achievement or an Associate in Applied Science degree program.

Changes or substitutions for course work in the college catalog must be listed and approved by the advisor. It is essential that students meet quarterly with their advisor before registration to review progress and plan their program.

Each program plan must be approved by the Workforce Education program advisor and Dean of Workforce Education. Certificates will be issued out of the Dean of Workforce Education Instructional Services office.

Certificate of Achievement

Certificate of Accomplishment

Title of Certificate:

Advisor Approval:

Advisor

Date

Program Completion Approval:

Dean of Workforce Education

Date

Instructional Services Office Assistant

Date

Big Bend Community College WORKFORCE EDUCATION PROGRAM REQUIREMENTS

Associate in Applied Science Degree

Credit Requirement: Completion of the total credit requirements of the approved Workforce Education Program Plan. Minimum of 90 quarter hours. It is the student's responsibility to insure that he/she meets all of the technical and general education degree requirements.

MATHEMATICS REQUIREMENT: 3-5 credits* in mathematics courses as stated in the approved Professional/Technical Program Plan.

BUS 102	Business Mathematics
MAP 100	Applied Mathematics (AMT)*
MAP 101	Applied Mathematics (AUT/WLD)
MAP 103	Applied Mathematics (MMT/IET)
MAP 117	Applied Mathematics for Workforce I
MAP 119	Applied Mathematics for Workforce II
MATH& 107	Math in Society
MATH& 141	Pre-Calculus I
MATH& 146	Intro to Statistics
MATH 147	Finite Mathematics

*AMT program requires two MAP 100 credits

WRITTEN COMMUNICATIONS REQUIREMENT: 3-5 credits in written communications courses as stated in the approved Professional/Technical Program Plan.

BUS 121	Business English
ENGL& 101	English Composition I
ENGL 109	Applied Technical Writing

ORAL COMMUNICATIONS REQUIREMENT: 3-5 credits in oral communications courses as stated in the approved Professional/Technical Program Plan.

AVF 225	Effective Communications in Flight Instruction
CMST 100	Human communications
CMST& 210	Interpersonal Communications
CMST& 220	Public Speaking

HUMAN RELATIONS REQUIREMENT: 3-5 credits in human relations courses as stated in the approved Professional/Technical Program Plan.

BUS 120	Human Relations on the Job
EDUC& 115	Child Development
PSYC& 100	General Psychology
SOC& 101	Intro to Sociology

INDUSTRIAL FIRST AID REQUIREMENT: 2 credits in Industrial First Aid or equivalent or higher certification as stated in the approved Professional/Technical Program Plan.

FAD 150	Industrial First Aid and CPR plus Bloodborne Pathogens
Current First Aid/CPR, First Responder, or EMT card	

Approval: _____

Advisor _____ Date _____

Program Completion Approval: _____

Dean of Workforce Education _____ Date _____

Each program must be approved by the Workforce Education program advisor. Program changes and substitutions must be approved by the program advisor prior to application for degree.